

## ZENTO FAMILY

THE ZENTO IS ONE OF OUR MOST POPULAR SECURITY GATES, TRIED AND TRUSTED IN THOUSANDS OF RETAIL OUTLETS IN EUROPE AND AROUND THE GLOBE.

The Zento is an extruded aluminium lightweight yet robust antenna, perfectly matching to your store interior and non-obtrusively fulfilling its task.

Designed with maximum transparency, minimising entrance obstruction yet offers maximum detection of hard tags and disposable tags in challenging store environments.



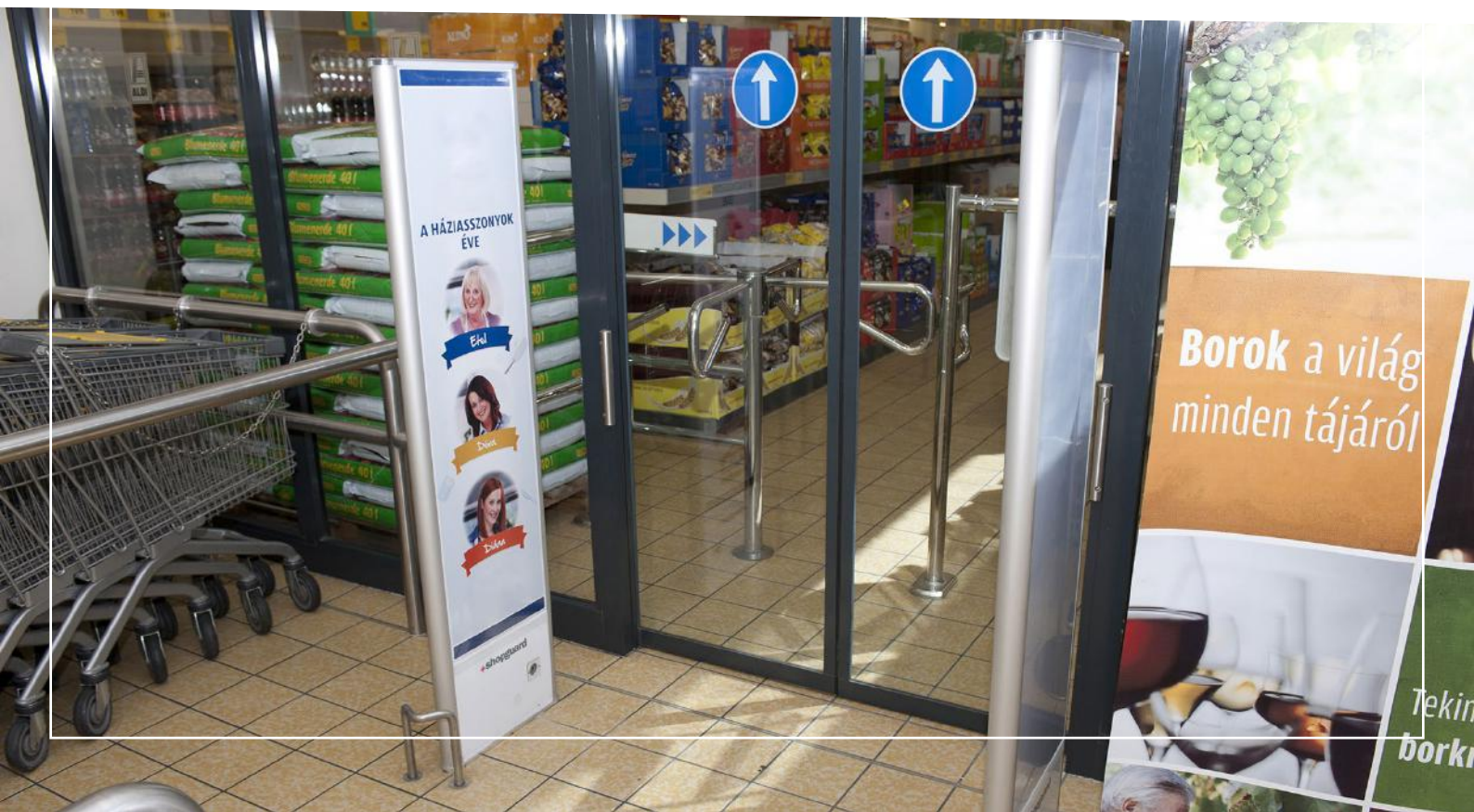
The Zento is available in **RF** with TX/RX and TRX versions, with PC connection and remote monitoring available for TRXs.



## ZENTO FAMILY (DISTANCE DATA BETWEEN ANTENNAS)



	# Product No.	TRx mono	Shield on side	Detection 4x4 paper label (normal/max)	Detection round hardtag (normal/max)
<b>L-Line (Large)</b>					
Zento L-150 RF AFT-TRx	P0200352	yes		2/2,4m 78/94in	2,4/2,8m 78/110in
Zento L-170 RF AFT-TRx	P0200349	yes		2/2,4m 78/94in	2,4/3m 94/118in
Zento L-150 RF Tx/Rx	P0200291/*2			3/3,4m 118/134in	3,8/4,2m 150/165in
<b>N-Line (Normal)</b>					
Zento N-150 Light RF AFT-TRx	P0200389	yes		1,8/2,2m 70/86in	2,2/2,6m 86/102in
Zento N-150 RF Tx/Rx	P0200297/*8			2,8/3,2m 110/126in	3,6/4m 140/157in
Zento N-150 RF AFT-TRx	P0200353	yes		1,8/2,2m 70/86in	2,2/2,6m 86/102in
<b>S-Line (Slim)</b>					
Zento S-170 RF AFT-TRx	P0200368	yes		1,2/1,6m 47/62in	1,6/2m 62/78in
Zento S-170 RF AFT-TRX ISSH	P0200367	yes	yes	1,1/1,5m 43/59in	1,4/1,8m 55/70in



## ADVERTISING INSERT SIZE

	# Product No.	Height	visible height	Width	visible width
<b>L-Line (Large)</b>					
Zento L-150 RF AFT-TRx	P0200352	<b>1265mm</b>	1246mm	<b>450mm</b>	434mm
Zento L-170 RF AFT-TRx	P0200349	<b>1465mm</b>	1446mm	<b>450mm</b>	434mm
Zento L-150 RF Tx/Rx	P0200291/*2	<b>1265mm</b>	1246mm	<b>450mm</b>	434mm
<b>N-Line (Normal)</b>					
Zento N-150 Light RF AFT-TRx	P0200389	<b>1228mm</b>	1208mm	<b>350mm</b>	334mm
Zento N-150 RF Tx/Rx	P0200297/*8	<b>1265mm</b>	1246mm	<b>350mm</b>	334mm
Zento N-150 RF AFT-TRx	P0200353	<b>1265mm</b>	1246mm	<b>350mm</b>	334mm
<b>S-Line (Slim)</b>					
Zento S-170 RF AFT-TRx	P0200368	<b>1410mm</b>	1391mm	<b>250mm</b>	234mm
Zento S-170 RF AFT-TRX ISSH	P0200367	<b>1410mm</b>	1391mm	<b>250mm</b>	234mm



# Zento L-150 RF AFT-TRx

## P0200352

### General Info

Family	Zento
Size	Large
Type	TRx mono system

### Recommendation 4x4 paper label

	metric	imperial
Norm/Max Distance*	2/2,4m	78/94in
Norm/Max On side*	1/1,2m	39/47in

### Recommendation round hardtag

	metric	imperial
Norm/Max Distance*	2,4/2,8m	78/110in
Norm/Max On side*	1,2/1,4m	47/55in

### Dimension

Height	1,526m	60in
Width	0,511m	20in
Depth (thickness)	0,061m	2.4in
Approx. weight	8,9kg	19.58lbs

### Electrical Requirements

PSU	18V AC	
Power Consumption	7W	
Operating Temp.	0 - 40 °C	32 - 104 °F

### Other

Antenna Safety	CB, UL/cUL
Emissions Safety	FCC/IC, CE
Materials Used	aluminium side, plastic insert and body

\*detection distance may vary, depends on **environment** and **tag type**.



Tx/Rx duo

TRx Alternating Field



Available colours



white

# Zento L-170 RF AFT-TRx

## P0200349

### General Info

Family	Zento
Size	Large
Type	TRx mono system

### Recommendation 4x4 paper label

	metric	imperial
Norm/Max Distance*	2/2,4m	78/94in
Norm/Max On side*	1/1,2m	39/47in

### Recommendation round hardtag

	metric	imperial
Norm/Max Distance*	2,4/3m	94/118in
Norm/Max On side*	1,2/1,5m	47/59in

### Dimension

Height	1,726m	68in
Width	0,511m	20in
Depth (thickness)	0,061m	2.4in
Approx. weight	12kg	26.4lbs

### Electrical Requirements

PSU	18V AC	
Power Consumption	7W	
Operating Temp.	0 - 40 °C	32 - 104 °F

### Other

Antenna Safety	CB, UL/cUL
Emissions Safety	FCC/IC, CE
Materials Used	aluminium side, plastic insert and body

\*detection distance may vary, depends on **environment** and **tag type**.



Available colours



**RMS**  
by shopguard



dark grey

Tx/Rx duo

TRx Alternating Field

# Zento L-150 RF Tx/Rx

## P0200291 / P0200292

### General Info

Family	Zento
Size	Large
Type	TRx mono system

### Recommendation 4x4 paper label

	metric	imperial
Norm/Max Distance*	3/3,4m	118/134in
Norm/Max On side*	1,5/1,7m	59/67in

### Recommendation round hardtag

	metric	imperial
Norm/Max Distance*	3,8/4,2m	150/165in
Norm/Max On side*	1,9/2,1m	74/82in

### Dimension

Height	1,526m	60in
Width	0,511m	20in
Depth (thickness)	0,061m	2.4in
Approx. weight	9,2kg	20.24lbs

### Electrical Requirements

PSU	24V DC	
Power Consumption	4W/16,5W	
Operating Temp.	0 - 40 °C	32 - 104 °F

### Other

Antenna Safety	CB, UL/cUL
Emissions Safety	FCC/IC, CE
Materials Used	aluminium side, plastic insert and body

\*detection distance may vary, depends on **environment** and **tag type**.



Available colours



white

Tx/Rx duo

TRx Alternating Field

# Zento N-150 Light RF AFT-TRx

P0200389

General Info	
Family	Zento
Size	Normal
Type	TRx mono system

Recommendation 4x4 paper label	metric	imperial
Norm/Max Distance*	1,8/2,2m	70/86in
Norm/Max On side*	9/1,1m	35/43in
Recommendation round hardtag	metric	imperial
Norm/Max Distance*	2,2/2,6m	86/102in
Norm/Max On side*	1,1/1,3m	43/51in
Dimension		
Height	1,526m	60in
Width	0,411m	16.2in
Depth (thickness)	0,061m	2.4in
Approx. weight	9,2kg	20.24lbs

Electrical Requirements		
PSU	18V AC	
Power Consumption	7W	
Operating Temp.	0 - 40 °C	32 - 104 °F

Other	
Antenna Safety	CB, UL/cUL
Emissions Safety	FCC/IC, CE
Materials Used	aluminium side, plastic insert and body

\*detection distance may vary, depends on **environment** and **tag type**.



Tx/Rx duo

TRx Alternating Field



Available colours



light grey

# Zento N-150 RF Tx/Rx

## P0200297 / P0200298

General Info	
Family	Zento
Size	Normal
Type	Tx / Rx system

Recommendation	metric	imperial
<b>4x4 paper label</b>		
Norm/Max Distance*	2,8/3,2m	110/126in
Norm/Max On side*	1,4/1,6m	55/63in
<b>Recommendation</b>	<b>metric</b>	<b>imperial</b>
<b>round hardtag</b>		
Norm/Max Distance*	3,6/4m	140/157in
Norm/Max On side*	1,8/2m	70/78in
Dimension		
Height	1,526m	60in
Width	0,411m	16.2in
Depth (thickness)	0,061m	2.4in
Approx. weight	7,7kg	17lbs

Electrical Requirements		
PSU	24V DC	
Power Consumption	4W/16,5W	
Operating Temp.	0 - 40 °C	32 - 104 °F

Other	
Antenna Safety	CB, UL/cUL
Emissions Safety	FCC/IC, CE
Materials Used	aluminium side, plastic insert and body

\*detection distance may vary, depends on **environment** and **tag type**.



Available colours



white

Tx/Rx duo

TRx Alternating Field



# Zento N-150 RF AFT-TRx

## P0200353

General Info	
Family	Zento
Size	Normal
Type	TRx mono system

Recommendation 4x4 paper label	metric	imperial
Norm/Max Distance*	1,8/2,2m	70/86in
Norm/Max On side*	0,9/1,1m	35/43in
Recommendation round hardtag	metric	imperial
Norm/Max Distance*	2,2/2,6m	86/102in
Norm/Max On side*	1,1/1,3m	43/51in
Dimension		
Height	1,526m	60in
Width	0,411m	16.2in
Depth (thickness)	0,061m	2.4in
Approx. weight	8kg	17.6lbs

Electrical Requirements		
PSU	18V AC	
Power Consumption	7W	
Operating Temp.	0 - 40 °C	32 - 104 °F

Other	
Antenna Safety	CB, UL/cUL
Emissions Safety	FCC/IC, CE
Materials Used	aluminium side, plastic insert and body

\*detection distance may vary, depends on **environment** and **tag type**.



Available colours



white

Tx/Rx duo

TRx Alternating Field

# Zento S-170 RF AFT-TRx

## P0200368

### General Info

Family	Zento
Size	Slim
Type	TRx mono system

### Recommendation 4x4 paper label

	metric	imperial
Norm/Max Distance*	1,2/1,6m	47/62in
Norm/Max On side*	0,6/0,8m	23/31in

### Recommendation round hardtag

	metric	imperial
Norm/Max Distance*	1,6/2m	62/78in
Norm/Max On side*	0,8/1m	31/39in

### Dimension

Height	1,726m	68in
Width	0,311m	12.2in
Depth (thickness)	0,061m	2.4in
Approx. weight	8,3kg	18,26lbs

### Electrical Requirements

PSU	18V AC	
Power Consumption	7W	
Operating Temp.	0 - 40 °C	32 - 104 °F

### Other

Antenna Safety	CB, UL/cUL
Emissions Safety	FCC/IC, CE
Materials Used	aluminium side, plastic insert and body

\*detection distance may vary, depends on **environment** and **tag type**.



Available colours



dark grey

Tx/Rx duo

TRx Alternating Field

# Zento S-170 RF AFT-TRX ISSH

P0200367

General Info	
Family	Zento
Size	Slim (Internal Slim Shielded)
Type	TRx mono system

Recommendation 4x4 paper label	metric	imperial
Norm/Max Distance*	1,1/1,5m	43/59in
Norm/Max On side*	shielded	shielded
Recommendation round hardtag	metric	imperial
Norm/Max Distance*	1,4/1,8m	55/70in
Norm/Max On side*	shielded	shielded
Dimension		
Height	1,726m	68in
Width	0,311m	12.2in
Depth (thickness)	0,061m	2.4in
Approx. weight	13,8kg	30.36lbs

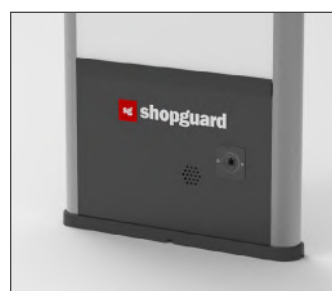
Electrical Requirements		
PSU	18V AC	
Power Consumption	7W	
Operating Temp.	0 - 40 °C	32 - 104 °F

Other	
Antenna Safety	CB, UL/cUL
Emissions Safety	FCC/IC, CE
Materials Used	aluminium side, plastic insert and body

\*detection distance may vary, depends on **environment** and **tag type**.



Available colours



dark grey

Tx/Rx duo

TRx Alternating Field

# Integrated Cashier Antenna RF AFT-TRx

Contact us!

General Info	
Family	Other
Type	TRx system with shield on one side (on cashier side)

Recommendation 4x4 paper label	metric	imperial
Norm/Max Distance*	1,6/2m	78.74in
Norm/Max On side*	0.8/1m	39.37in
Recommendation round hardtag	metric	imperial
Norm/Max Distance*	2,4/2,8m	110.23in
Norm/Max On side*	1,2/1,4m	47.24in

**Custom made!**

Contact us for further info!

Dimension		
Height	1,606m	63.23in
Width	0,328m	12.92in
Depth (thickness)	0,106m	4.17in
Approx. weight	12,2kg	26.84lbs

Electrical Requirements		
PSU	18V AC	
Power Consumption	10W	
Operating Temp.	0 - 40 °C	32 - 104 °F

Other	
Antenna Safety	CB, UL/cUL
Emissions Safety	FCC/IC, CE
Materials Used	steel frame, plastic body

\*detection distance may vary, depends on **environment** and **tag type**.



Tx/Rx duo

TRx Alternating Field